



MILTON KEYNES Angling

Association

newsline



For 2013 -'14

Society of responsible anglers founded in 1970.

Members of the Angling Trust and UOFCA

GREAT CATCHES!



JUST a few of the sort of catches keeping MKAA members happy (left to right) ● Duncan Menzies 7-6 Stone Park chub ● Pete Barby sunny afternoon 24lb Furzton mirror ● Pete Patton 57-6 Lodge bream match catch

And one which **REALLY** set the carp-catchers' grapevine buzzing...

A WILLEN WHOPPER!

Sam's 39-10 shows stocking paying off

What a stunning fish! And this leviathan's capture – back in late April – REALLY lit the local carping season's blue touchpaper...

Just six ounces shy of 40lb at 39-10, Willen's largest authenticated capture (so far) adds almost TWO clear pounds to MKAA's carp record, a 37-13 from Caldecotte two years back (which had upstaged a 35-8 from Furzton two years before that).

And for captor Sam Willis (superb picture by Jason Partlow) banking it on a Sunday morning came as just reward for 'sticking out' a miserable week of bitter winds and frosts on wide-open Willen's 150 acres.

While so many other carpers were waiting for warmer weather to start their campaigns, he and Jason fished four unproductive days before the latter gave it best.

Sam fished on. Jason said: "He kept moving swims as the wind changed direction, and ended up in the one where he had started."

The biggie, hooked in a four foot deep swim, apart the weekend saw Sam also net a 24-2, a 10 and an 8.

A 'known' fish the 39-10 is thought to have put on, despite the harsh winter, some two pounds since last summer. And as a number of other known fish were visibly larger than it back then, the odds on a Willen 40 some time soon are probably better than ever before...

● Willen Lake (actually two flood-relief



● Sam Willis – looking like a man who has just woken up in angling heaven – with his Willen 39-10

balancing lakes, north and south) was created in the early 70s and has had numerous MKAA stockings – sometimes in partnership with the Parks Trust.

Several thousand fast-growing 'Supacarp' of a few ounces were added six to seven years back, and many of those are now in the mid to late 20s!

The one Sam had likely entered the lake best part of a decade ago, as part of half-a-ton of doubles purchased when a BW reservoir was being cleared.

And they, too, are still growing ■

PREDATION
Otters? We have to deal with a much wider problem. See page 4

HATS OFF TO JACK

● Jack Leeman became MKAA's latest national champion at the age of 17.

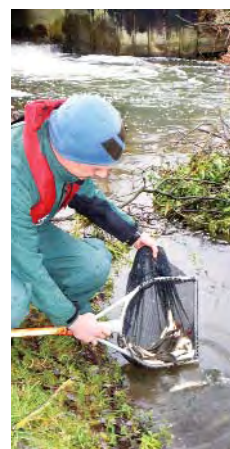
Fishing for MKAA's squad in the Angling Trust intermediate national championship on a commercial, he stormed to the individual title with almost 79lb of carp.

Team manager Ian Greenhood said: "Jack did exactly the right things to make the most of being drawn on fish. He's a natural winner."

MKAA's squad finished 8th in the overall team stakes ■



More EA fish for our rivers



● Environment Agency fisheries officers have, over the past two years, poured thousands and thousands of junior barbel – plus some chub, dace and roach – into the Upper Ouse and Ouzel.

They have come from the EA's Notts fish rearing facility and are part of planned moves to rejuvenate both rivers.

And following a three-year research project on the Ouse – part-funded by MKAA and UOFCA (Upper Ouse Fisheries Consultative Association) – the EA team have been up to their twiddly bits in cold river water working to improve spawning habitats for all species.

They've also cracked down on licence evasion and 'fish thieves' locally, while dealing with fish-kills and pollution and bringing surplus fish to our stillwaters from elsewhere.

All part of what your rod licence pays for ■

Want to know more - or BUY ON-LINE? Call 01908 270000 / 07759 129800 ... or visit www.mkaa.co.uk

The 'cut' - you never know what it will turn up next

If any MKAA water can be relied on to come up with a few fish when everywhere else seems dead, it has to be the good old Grand Union Canal.

On good days – and nights – it is everything from a fantastic match venue to an out and out specci water...with a huge amount of leisure fishing potential in between.

On the coldest days it will usually come up with at least a few perch and gudgeon for those who just HAVE to get out and fish for something...providing they can break through the ice, that is.

And yes, ice-breaking on the cut frequently ATTRACTS fish.

Its consistency is underlined by the fact that – in five NFA/Angling Trust senior National Championships hosted in the city so far...there wasn't a single dry net!

And it has produced numerous 30 or near 30lb match catches (generally bream) and carp – first introduced back in the early 70s – from 25lb to 30lb+.

It can also throw up surprises – like MKAA's 30-2 catfish record – or 'weirdies' like the 'banana' perch pictured right.

On better days – and the canal has lots of them – it can be a specialist Mecca with big carp, pike, tench to 9 and bream over 7,

perch pushing 4-8, numbers of pound-plus roach...and hordes of smaller fish for people of all skill levels.

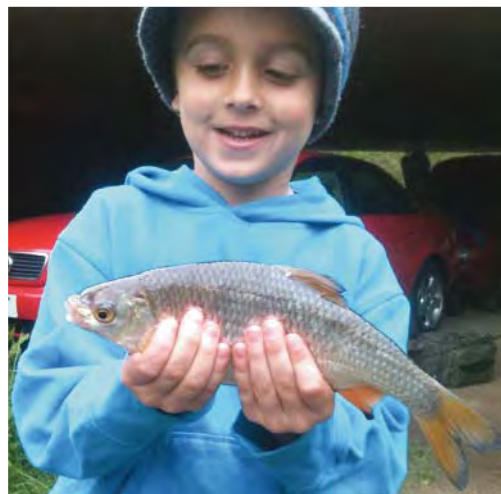
Over the past two seasons, among other things: James Drakulic won a league match with 35-15 of bream at Fenny, Ernie Sattler won another with 21lb, Brian Hare triumphed with 16lb of slabs and, at the other end of the scale, Paul Neave once made the frame with 129 fish for just 3-2-12.

On another occasion veteran Roger Stratton had several pike to 20lb in a couple of hours 'test fishing' cheap-o lures he'd just bought.

About the only time it is likely to be a no-no is when it's gin clear which, thankfully, doesn't happen that often.

Go make the most of MKAA's 9.5 miles of local canal. You might be pleasantly surprised.

Pictures: top, 5 year old Harley with his first fish caught all by himself – a 12 ounce canal roach; below that, left, canal junior national in



progress at Fenny; right, Dave Stallward with golden perch caught twice in six days on the Black Horse section (and



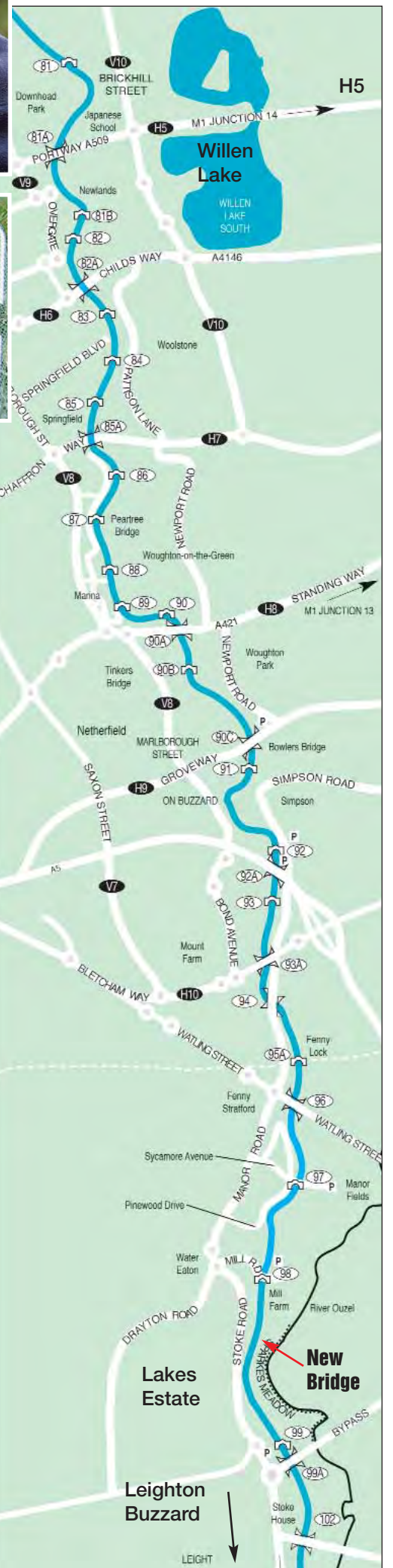
never seen again)

Below Dave: part of two stockings with £1,000-worth of small but fast growing 'supa carp' MKAA has added to the cut to help balance loss of fish due to old age.

Next on the list is to add some chub



MKAA canal maps



Dad and lad's great day out

It was a fun day out on the city Grand Union for dad and lad Mark and Marcus Woolley (pictured by Steve Sharp) as Mark managed a 21lb two-tone mirror and Marcus – aged 6 – a 13!



Carp were first stocked (in quantity) into the local cut in the early 70s after a disastrous engineering foul up 'de-watered' five miles – killing virtually all the fish present! They have grown, and been caught, to 35lb since.

Promote your fishery or club!

- Colour brochures • Leaflets • Postcards
- Calendars • Day tickets • Business cards
- Posters • Membership cards • Adverts
- Illustrations & maps and much more!

for any printing please contact us for a quote or samples

Tel: 01604 820380

e-mail: sarablenkharn@virginmedia.com

If YOU can't be asked to take YOUR rubbish home – DON'T come to MKAA waters!!!

Under new ownership

Carp On Baits Ltd

Having served an apprenticeship with Whacker Catcher Products we have gained a wealth of experience and knowledge from many good anglers – and with suppliers such as Active Bait Solutions, Haiths and CC Moore, we use top quality ingredients.

Go to www.carponbaitsltd.co.uk to see our range of baits or **Design Your Own Bait**

We work with you to ensure you get the bait you really want! Phone or email and discuss your requirements, and we will provide suggestions and samples of your own bait.

Phone: 07903 399419

Or find us at:
Greenhill Farm
Dunstable Rd
Tilsworth,
Beds
LU7 9PU



YOU may not have noticed – yet – but last year saw probably the biggest change in the history of British canals since nationalisation in 1948.

The nation's network passed from the government's under-funded British Waterways to the Canal and River Trust.

That charitable body involves volunteers and groups across the country in managing the canals, plus some river sections.

The government has cheerfully freed itself from the expense – and the trust now has to generate funding, manage upkeep...and cope with a major maintenance backlog.

So if you care for the cut and its fishing, get involved. Maybe do some volunteering – even if only 'volunteering' your opinions through the focus groups sure to appear.

If we don't, don't be surprised if the new world rolls right over us as we sit on our boxes

Home of big fish - that's Willen!

Mighty Willen really raised its game this spring – setting the local grapevine buzzing when Sam Willis banked a cracking 39-10 common!

That superb fish (pictured) put the fishery firmly on top of MKAA's carp 'ladder' – overtaking Caldecotte (best reported 37-13) and Furzton (best reported 35-8).

Bigger fish are 'rumoured' to have been caught there and to have been seen in there: but Sam's catch was living, recorded, indisputable proof that the water can 'do' fish on the 40 mark...with bigger ones a real prospect.

And increased 'angler interest' saw numerous 20s and at least a couple of 30s being landed within a few weeks of Sam's catch being landed.

But Willen – two lakes totalling around 150 acres – is about more than carp alone, holding both bream and tench to double figures, good pike, perch, and shoals of roach.

Created, almost 40 years ago and initially stocked with silverfish, it has been constantly evolving and maturing ever since.

On the carp front, years of stocking by MKAA, frequently partnered by the Parks Trust, have seen thousands and thousands of pounds worth of carp – some from Naseby reservoir and hordes of fast-growing 'Supa-carp' – introduced to the south lake.

And their growth rates prove they love it there.

Willen can be a dauntingly vast place to fish – but can also be magic! Go give it a try.

The north lake is far more tranquil than the south, and don't be put off by a big blow. If you take the punishment then fishing into the wind off the east bank can REALLY pay off!

And like most MKAA waters it is available to day ticket anglers.

- 3 rods permitted if you have a 3 rod ticket.

- No baitboats allowed ■

No apologies for using the same picture on the front AND page 3. It is so good it won the £100 prize in last season's MKAA photographic competition for Jason Partlow, who took it.

Have a go and YOU could be this year's winner!



Sam Willis with 39-10 Willen common April 2013

Lodge Lake

Lodge can give you a net-full of roach or a near 30 carp. Then again it might be slab-sized bream or hard fighting tench.

On other days it can be gudgeon, big perch or a big crucian. Lodge can also be a cracking match venue, specci water or a simple fun fishery – its heaviest match-weight is 142 lbs!

An all-weather water, it has produced many carp topping 20 in the depths of winter.

Fish it in winter off the H4 bank and you could be in for some superb action.

Fishing is from more than 40 permanent pegs and depths vary between 2 & 18 feet.

Most baits work at some time –

and don't forget the 'wilderness' pegs near the the badminton centre.

An Angling Times league final, fished on Furzton, Tear Drops and Lodge the autumn before last saw the latter producing numerous double-figure roach bags (some pushing 20lbs) both in the match and in practice sessions.



• Yes, we are amused... MKAA youth development officer Nuala Gray shows how it is done with this 6lb Lodge slab

Don't expect to do that everyday. The shoals are notoriously nomadic...but well worth trying for!

TWO rods only, traditional close season (March 15 to June 15 inclusive) NO parking on the H4 verge, and no night fishing from the six pegs opposite the bungalows on the paddock swims (✗ on the map below)...and please, no using the bushes as a midden!

• Over the past 36 months MKAA has, as part of on-going fishery improvements, added several hundred crucians, carp, and skimmer bream into Lodge plus – thanks to the **Environment Agency's** fishery team – more than 5,000 small silverfish ■



• More silverfish for Lodge

'Snap' up a £100 prize!

That's what Jason Partlow did when he sent in this picture of Sam Willis with his MKAA record carp.

He did NOT get the prize simply because the fish was so big. He DID get it because it is such a great picture.

Technically excellent with nicely balanced fill-in flash, it is the expression on Sam's face which clinched it – the look of a man who has just opened his eyes and found himself in angling heaven!

Nice one – both of you.

But ANYONE (season or day ticket) is in with a chance of **winning £100** if they submit a picture of their – **or someone else's** – catch or fishy moment, to MKAA.

It doesn't have to be a huge fish, massive bag or even include fish...just a good picture illustrating the magic of our sport.

It should capture that special moment...transforming an ordinary picture into something special.

RULES:

1) It must have been taken on an MKAA fishery (Emberton, Letchworth & Oxford shared waters included for this purpose).

2) Send it with FULL name, address, phone number, and description, within FOUR weeks of it having been taken.

3) The winner will be chosen by MKAA executive officers (they and bailiffs CANNOT enter) and their decision will be final on all matters.

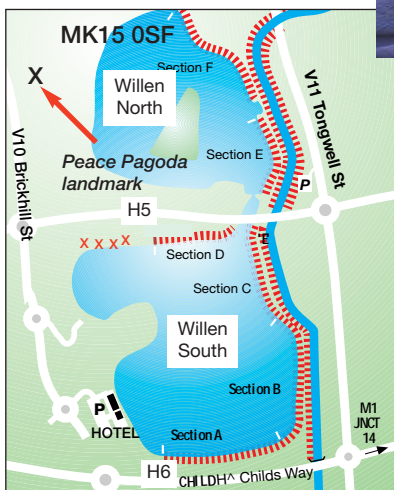
4) MKAA will have the right to publish pictures submitted and may retain the print/transparency/e-file for future use.

Please send your entries to: MKAA, PO Box 3195, Milton Keynes, MK3 6ZY.

You can also email electronic files (**DECENT size JPEG format is best**) to:

info@mkaa.co.uk if using digital...but PLEASE send full-size files and a phone number.

Good luck – enjoy your snapping as well as your fishing ■



Wolverton Mill

Wolverton Mill is two tiny stormwater lakes with just over a dozen pegs between them (see map).

They are heaving with carp (including crucians) of all sizes up to mid-20s – which make it a fun fishery for all ages.

Have fun and keep it simple, this is NOT a

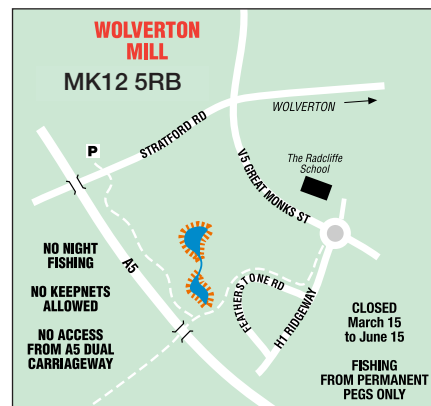
multiple rods, bolt rigs and bivvie water.

No night fishing. No keepnets in the interests of fish welfare.

MKAA has installed concrete peg markers and fishing is only allowed from the immediate vicinity of those markers.

Traditional close season (March 15 to June 15 inclusive) applies.

Dominic Corkett, left, then aged 8, shows his first-ever carp – a near 10 pounder from T' Mill. He got so excited his mum and dad had to hold on to him to stop him going in ■



PLEASE DON'T disgrace the rest of us - see page 8

Real-world fishery management means living with predation

Do otters kill fish? Yes. And so do quite a few other things.

No one can reasonably deny they've made a massive dent in the (already small) population of Upper Ouse big barbel.

But though they can be deeply damaging to some fish species populations otters alone are NOT, in my view, THE major threat to angling as we know it in local lakes and rivers.

A whole range of factors are at work – some incredibly destructive, and often invisible.

Otters are easy to blame – but cursing them for everything is just too easy...and wrong.

Yes fisheries could do without them. But that is NOT an option.

They are BACK, fully protected by law and, massively popular with most non-anglers (and even a few anglers).

Be stupid enough to harm one...and you would convert a mass of 'don't knows' into ardent anti-anglers over-night.

Most outside of angling don't give a fig about a fish when they see it sliding down a 'cute, cuddly thing's' throat on tv.

So get real. Otters are here. And we, and our fisheries, have to learn to live with them.

THE REAL THREAT

But what about the rest of the picture. Cormorants, mink, human predators (not ALL from Eastern Europe) and professional fish thieves also predate on fish stocks.

Then there are the 'invisible' but hugely damaging factors: agricultural fertiliser washing into rivers and lakes, nutrients from sewage treatment plants and, from the same plants, estrogens ('biological' washing powders a prime source) thought to interfere with some fish species' ability to breed.

And red signal crayfish (RSC) eat fish eggs, fry and invertebrates which fish need as food; and burrow into banks which eventually collapse. None of them, unlike otters, are part of the local

By Trevor Johnson – Chairman, MKAA

natural scene...but ALL are part of a situation in which fish and, to an extent indigenous waterfowl, are pretty much top of the potential victim list.

For any lasting fisheries benefit we have to tackle the whole problem – not get side-tracked into JUST ranting about untouchable otters.

Is there a fisheries upside to otters? Fish-killing mink have dramatically declined locally over the past couple of years, believed to have been driven out by otters.

The Parks Trust (an independent, Milton Keynes-based charitable status organisation NOT in receipt of council tax or other public money) monitors mink numbers...and hasn't come across evidence of one in 18 months.

And otters' preferred food used to be eels, but there are few of those locally these days. So they tend to go for the next most easily available meal, red signal crays.

Routine otter dropping analysis shows evidence of cray remains and, most of the time, little else.

But in really cold weather RSC burrow into the banks, and otters look elsewhere.

Unfortunately large barbel have a tendency to 'lay up' in undercut slacks and are easy prey.

DO RIVERS MATTER?

If you only fish for big carp in lakes...do barbel, and rivers in general, matter?

Very much so. All else apart, if otters can't get a meal in the river – they may end up looking for a torpid carp.

Long term the ideal answer would be to minimise all the threats. But many of them are insoluble – certainly in the short term.

Otters are here to stay (though their numbers are limited by the willingness of the males to fight to the death); RSC are unlikely to be eliminated however many we trap;

cormorants can only be thinned out, not eliminated; fish theft by humans can never be entirely stopped; water quality will never be perfect; pollution/abstraction will always happen; and fish will always be lost due to spawning stress.

That is NOT a suggestion that we should stop trying to deal with such problems! But in the short to medium term we HAVE to find real-world solutions.

PRACTICAL APPROACH

Given that significant 'fish losses' (above normal mortality rates due to old age etc) look set to remain a fact of life, surely the practical approach has to be bolstering fishery stocks to better withstand damage and provide quality sport?

That is part of the reason why the Environment Agency's fishery team good guys are making so much effort to revitalise Ouse and Ouzel barbel stocks (see front page).

● Having established that species' current limited ability – due to inadequate river conditions – to regularly spawn in quantity, and its low fry survival rates; they are physically improving spawning gravels and introducing thousands of junior barbel to use them... **so that the river can restock itself in years to come.**

● They're also trying to improve cover for fish in forms ranging from trailing willow fronds to rocks and side ditches.

Co-incidentally such moves will benefit many species, not just barbel.

More power to the EA's elbows (and backs).

● *MKAA works hand in glove with the EA on regenerating the Upper Ouse and its tributaries (not just the bits where it has fishing rights).*

MKAA/PARKS TRUST JOINT AMBITION

We also work closely with the Parks Trust, which controls the majority of fishing rights in MK.

Due to sometimes conflicting interests that relationship, though enduring and strengthening,

can be a bit 'full and frank' at times.

But on fisheries both parties share a common ambition: to provide the best we can within the constraints of public parks.

● Which is why MKAA continues to spend thousands of pounds each year on stocking and improving fisheries under its control.

● Like MKAA, the Trust also works closely with the EA – on things ranging from fishery improvement to coping with bank erosion.

● *The Trust also puts significant sums into things benefiting – not always exclusively – angling...(including litter collection) spending more than it gets from anglers.*

● For example over the past two years it has paid out for platform repairs/maintenance and swim clearance on Tear Drops and Lodge.

● This year's work included, among other things, some £7,000 worth of reed planting on the new floodplain forest area alongside Whitings, near Old Wolverton.

That big-bucks Parks Trust project is creating a network of ponds, meres and ditches connected directly to the Ouse – and is set to become a tremendous fish rearing area, continuously feeding fresh fish into the river.

● Among numerous other things on the Trust/MKAA table is the possible joint funding of 'drip feed' stocking of various lakes with small fast-growing carp to help maintain and boost future populations (necessary because although carp spawn prolifically some years, they unfortunately frequently eat most of the eggs before they can hatch).

● There is also a joint MKAA/Trust venture to create a small, 'commercial-style' fun fishery, near Bletchley (hopefully open by next spring) with larger fish grown on there moved into the likes of Furzton, Willen and Caldecotte.

Such moves, and others yet to come, are all part of fishery management IN THE WORLD AS IT IS...not as we would like it to be ■

Shuttleworth College

Centre of Excellence for Land-Based Education



The Extended Diploma in Fish Management

Designed to provide a springboard for learners to find work in the fisheries industry, including the sectors of fish production, sport fishing, recreational fisheries management, and aquatic and ornamental fisheries management, or to progress into higher education.

For further information contact Sue Fisk:

✉ sfisk@bedford.ac.uk

☎ 01234 291270



Shuttleworth College
Old Warden Park
Biggleswade
Bedfordshire SG18 9DX

Tear Drops - and Emberton Park



Barely two-acres apiece, the Tear Drops hold some mighty fish! Carp to 30lb have been caught, and there's a fair head of chub to 4lb+, particularly in TD number 1.

Winter flooding sees all four lakes occasionally become one, but each continues to exhibit distinctive characteristics.

Number 1 and 4 can be great autumn and winter roach fisheries with high double-figure bags of pound roach always on the cards, while number 2 holds lots of bream. Tench of 6lb+ can turn up in any of them, with slabs of a similar size.

Fishing is from permanent pegs only on lakes 1, 2 & 4 (lake 3 - working away from the National Bowl - is a non-fishing bird sanctuary).

Tear Drops can provide good sport almost any time of year, and access is from the two car parks off Davey Avenue

● Tear Drop 2 has benefited from several silverfish stockings, some part-funded by our Parks Trust landlord.

Part of a £1,000 silverfish stocking is pictured going into Tear Drop 2 (far right). Small, fast growing, 'Supacarp' have also been added. Good tench currently being caught from the 'drops' were originally added as small fish by MKAA.

● It's one thing to catch a carp on boilie... and another to catch it on one you've designed and developed yourself. That's what Neil Richardson (right) did with his Tear Drops 20-3 on his own-manufacture ConceptBait stuff... in late November.

● Bekka Corkett (below) - who'd already had a 6lb Stone Park chub - fished worm on Tear Drop 1 for her first-ever tench, which went 3-10.



A happy Steve Woodley & 26-12 Emberton mirror

Emberton Park is set in a world of its own - and can offer some great fishing.

With a water-side access road right round the inside of the 'park' (please stick to the surfaced car parks, especially in wet weather) and a barrier controlled entrance gate, an atmosphere of peace, tranquillity and security is normally all part of the picture.

Four lakes (open all year) hold fair stocks of most common species - carp into the 30s, bream close to double figures and tench which have even been known to feed during January snow storms.

For many years a 9-6-0 Emberton tench held top spot in MKAA's record list.

The 'park river - and the backwater over by the town bridge in times of winter flood - are deservedly popular and subject to the statutory close season, March 15 to June 15.

MKAA season tickets allow free day-time fishing (no night fishing) and you have to pay for car access: £4 a day April to October, £2.50 a day Oct to March. Season entry passes available from MK Council. With a 3 rod ticket (which also means 2 EA rod licences) you can use three rods on the big lakes



More fish for Tear Drop 2

● Pictured above: IT WAS happy hour THREE times over for Steve Woodley and Gary Varty as they got among Emberton Park's carp.

A three-hour evening spell on Grebe lake saw Steve (pictured) bank this 26-12 mirror and an 18-9 while Gary had a 21-8.

The pair did the business fishing pop-up boilies over hemp along the margins.



● MKAA chairman Trevor Johnson (right) with 5-9 TD 4 tench. He had it on humble worm after taking over a swim from a man who had tried boilies, pellets and the rest all without a bite.



ALL MAJOR CREDIT CARDS ACCEPTED

KIDS WELCOME



KIDS WELCOME

OPEN 8.00-5.30 Mon - Sat 9.00 - 12 noon Sundays



Bait, bait and more bait...

PROBABLY THE FRIENDLIEST TACKLE SHOP IN MILTON KEYNES
Come in and have a chat. We know all the local waters and if we know what's fishing we will be happy to pass on the info. We sell permits to cover 90% of waters in MK - MKAA, NPFA, Great Linford canal, DATS, Galleon and Vauxhall

WE now sell BEDFORD Angling Club permits



Knowing the finer points...

Ringers
Dynamite Baits
Nash - Bait Tech
Cotswold Baits - Rod Hutchinson
Van Den Eynde - Crafty Catcher,
Radical Boilies

Open AT 8.00 am weekdays



WE BELIEVE OUR BAIT IS THE BEST IN TOWN & WE'RE COMMITTED TO KEEPING IT THAT WAY!

FRESH maggot livebait daily

Kamasan
ABU Garcia - Fox
Nash - Shakespeare - Chub
Middy - JRC - Wychwood
Masterline - Enterprise

WE HAVE ALL THE USUAL TACKLE & BAIT NAMES IN STOCK

WILLARDS FISHING TACKLE

47 Newport Road - New Bradwell - Milton Keynes - MK13 0AQ

01908 225353 - www.willards.co.uk
tim@willards.co.uk

Trollies - rods - reels
nets - luggage
pods - spods & all the end tackle you will need

Hemp - sweetcorn
luncheon meat - tares -
bloodworm pastes - dips -
glugs additives

Bradwell, Furzton and Caldecotte



● Left: the late Simon Wragg with a 29lb 'ghostie' he caught (among other fine fish) from Bradwell Lake and river in his all to brief career. His family and friends have installed a memorial bench at the lake to commemorate his love of the fishery

Bradwell

When Bradwell Lake's big tench and bream (into double figures) come hard on they can provide tackle – and arm – testing sport.

The 26 acre maturing gravel pit's fast-growing carp – stocked a few years ago – are now into the 20s... but do not dominate the fishery.

There are also big shoals of roach but, with so much natural food, they can be elusive. When you do connect, pound+ fish can be the norm. Perch (some to 3 lb+) are present along with rudd, pike to 20+, chub, dace and even the odd gudgeon.

MKAA owns the 40 acre site which includes a quarter mile of Great Ouse and is flanked by part of MKAA's Bradwell canal section.

Tons of fish have been added, along with car parks, access road, 33 concrete top pegs and access paths to wheelchair standard.

● MKAA's 9-10 record tench, caught by Matt Hodges, was a Bradwell fish.



● Above: a sample of the thousands of junior tench MKAA has added to Bradwell; and, right, 'Jon' with 10lb Brad'll bream

● **E mail, June 19, 2013, says it all:** 'Not having fished Bradwell for 10 years or so, I am overwhelmed by its quality and also especially by the crew of bailiffs, they work ever so hard on that lake, and it is now a true jewel in the MKAA crown.

'I will be there this weekend for some more slab-tastic action, maybe that fella who had the 10 will be there again, who knows. I, by the way had 9 bream, from 6lb 12oz to 9lb 6oz, all females, all on cocktail baits, with plastic corn. Kind regards. Mike Davey.' Thanks Mike – MKAA

● Above: Geoff Arnold with fighting fit 21-2 Bradwell common – almost certainly one of the 2-3 pounders MKAA stocked back in 2008. Note the brilliant orange anal and tail fins



Furzton

FROM monster carp to chunky roach – Furzton is among MKAA's most exciting 'stillwaters'...heaving with fish of all shapes, sizes and species.

Well-known for its carp, it is also a cracking conventional match venue (5 hour record around 250lb in an Angling Times league final) – with huge shoals of bream – which also really comes into its own as a delightful pleasure fishery.

Other species include stillwater chub to at least 5 lb, tench to more than 8, perch pushing 4 and mega shoals of big roach.

It has hosted two world championships so far (veterans and ladies) and a 48 hour British Carp Championship final produce half a tonne of fish.

A steady wind is usually a help and, if you can catch it right, bites on feeder can be too frequent to use more than one rod



● Above: is he happy or what! Good old boy Rob Wilkinson had a real red letter day with this 18-2 Furzton common.

The 74-year-old battled with it for more than 30 minutes, having hooked it on three maggots and a size 16 to 4lb line on light waggler rod, before mate Rob Nurshaw (who took the picture) could net it for him.

But Rob paid a price for his fun. Already suffering from a chronic bad back, he said: 'I could hardly stand up for two days afterwards... but it was worth it.'

Now THAT is a true angler



● Mick Dowsett with one-time MKAA carp best – a 35-8 from Furzton



● Young Stefan Sadnani happy with his 18



● Danny Grobber, below, with one of the many Furzton fish he's banked



● Left: Parks Trust weed-cutting boat in action on Caldecotte



● Right: never too old to be a star – veteran match ace Geoff Ringer poses with one of Furzton's smaller bream for a magazine photo shoot

'Living memorial' to carper Jake



● THE 18lb mirror pictured above is probably unique in Britain – as it is a 'memorial' fish! It was stocked into Caldecotte this year as a living tribute to the late Jake Crawford who, tragically, drowned in the lake.

Warren, Jake's family, friends and workmates all contributed to a bill of more than £400.

A moving, but surprisingly cheerful, bankside ceremony preceded the fish's release.

It has a distinctive cluster of pale gold scales (inset pic) on its left shoulder and the family's hope is that in years to come, anglers will catch it, recognise it, and think of Jake.

● The stocking complied with all legal requirements

Caldecotte



● ConceptBait boss Neil Richardson with his former MKAA carp record – a Caldecotte 37-13

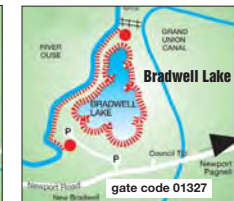
Tench and bream into double figures, carp probably into the 40s, big pike, perch, roach and hybrids – 90 acre Caldecotte Lake has the lot. Fish spotters have been rewarded with some outstanding catches.

On the right day 100 lb+ of big slabs is not out of the question...and some years see several such catches.

Depth averages around 12 feet and the fish are often right under your feet. It has produced MKAA's roach (3-

0-0) and pike (30-4-0) records.

● In recent years the EA has spent thousands of pounds on fish breeding areas to boost overall stocks, and MKAA has added batches of small, fast-growing 'Supa-carp'



MILTON KEYNES ANGLING CENTRE

Catch us while you can! CLOSING on September 30, 2013!

Special deals on and off ALL SUMMER THROUGH – come and see us TODAY

If YOU want it COME AND SEE US WHILE IT IS STILL IN STOCK!



Open late Friday nights, & **SUNDAYS 'till noon**

Large **PRIVATE** car park available at rear from 5.30pm Fridays through to Sunday closing

MONDAYS to THURSDAYS and SATURDAYS – 9.00am - 5.30pm
FRIDAYS – 9.00am to 6.00pm – **SUNDAYS 9.00am to noon**

Most local club cards & leading brands stocked
Always **FRESH** bait – **ALL** casters shop-run

3 & 4 St Giles House – 21 Victoria Road, Fenny Stratford, Milton Keynes, MK2 2NG

01908 374400

Join the oldest swingers in town

● Whatever the weather MK Vets (veterans) are out on a bank somewhere almost every Wednesday of the year and having – generally – a great crack with like-minded mates!

It is all about having a laugh – though some of the humour can be a bit on the 'dry' side.

Outings usually take the form of a match with nominal (around £3) pools on venues ranging from the cut and local club waters to out-of-town carp ponds.



Just a few of the MK vets, pictured by John Hewison

And in an age when one never quite knows for sure who, or what, else might come along, it is also about helping, and keeping an eye on, each other while on the banks.

And if you haven't yet reached 80... the others will throw you a birthday party

complete with cake, before the draw on the Wednesday nearest your big day.

But you don't have to be a full crumbly to join in – youngsters can start at 55 – or to go every week if you don't want to. Interested? Call Terry Valentine on 01908 565446

MILTON KEYNES ANGLING CENTRE
21 Victoria Road
Bletchley – MK2 2QH
MK 01908 374400

GILDERS TACKLE
250-252 Wellingborough Road
NORTHAMPTON NN1 4EJ
01604 636723
www.gildersonline.co.uk

Browns Angling Centre
Grovebury Rd **Leighton Buzzard**
LU7 4UX - 01525 216370

WILLARD'S
47 Newport Rd,
New Bradwell, MK13 0AQ
(less than a mile from Bradwell Lake) **01908 225353**

Bleak Hall Sports
1 HIGH STREET
KEMPSTON, Beds, MK42 7BT
01234 852530

GILDERS TACKLE
32 Montagu Street
KETTERING NN16 8RU
01536 514509
www.gildersonline.co.uk

The Tackle Den
© **WEAL'S – Motoring, Leisure & Tackle**
7 Park Street
TOWCESTER NN12 6DQ
01327 354711 & 07941 867535

LESLIE'S TACKLE
89-93 Park Street, **LUTON LU1 3HG**
01582 453542 Fax 01582 735740
& www.leslies-luton.co.uk

GONE-FISHIN
26 Church Street
Wolverton, MK12 5JN
01908 313158

Browns Angling Centre
Thame Road, **Haddenham**
HP17 8BY - 01844 290663

Jakeman's Sports & Tackle
50 Wedgewood St
Aylesbury HP19 7HL
01296 486613
www.jakemansports.co.uk

Carpin Capers
53-54 Barrack Road
Northampton NN1 3RL
01604 634115

J & K TACKLE
62/64 Sheep Street
BICESTER OX26 6LG
01869 242589
www.jktackle.co.uk

RULE Re fishing match venues!

● IF a match is booked (see list below) ALL anglers must be OFF that section by the preceding midnight. The ONLY exceptions are for evening events in which case you must be gone by 12 noon on the day of the match.

FURZTON LAKE			11/12 ALL 0800-1300		
07/07/13	A+B+C	0800-1430	01/01/14	ALL	0800-1430
16/07	A+B	1700-2200	08/01	ALL	0800-1430
21/07	A+B+C	0800-1430	12/01	ALL	0800-1430
24/07	A+B+C	0800-1300	26/01	ALL	0800-1430
27/07	B	0700-1400	09/02	ALL	0800-1430
04/08	A+B+C	0800-1430	23/02	ALL	0800-1430
18/08	A+B+C	0800-1430	08/03	ALL	0800-1430
21/08	A+B+C	ALL DAY	12/03	ALL	0800-1430
23/08	A+B+C	ALL DAY	STONE PARK R.Ouse		
24/08	A+B+C	ALL DAY	06/10/13	ALL	0700-1400
26/08	A+B+C	ALL DAY	07/12	ALL	0800-1430
07/09	A+B+C	0800-1630	15/12	ALL	ALL DAY
15/09	A+B+C	0830-1430	02/03/14	ALL	ALL DAY
21/09	A	0700-1400	TOOMBES R.Ouse		
22/09	B	0700-1400	26/06/13	ALL	0800-1300
25/09	A+B+C	0800-1300	11/09	ALL	0800-1300
WILLEN LAKE			22/09	ALL	0800-1300
22/09/13	B+C	0800-1500	28/09	ALL	1200-1800
BRADWELL LAKE None			20/10	ALL	ALL DAY
TEARDROPS LAKES			27/10	ALL	0800-1300
10/07/13	2	1700-2000	03/11	ALL	0830-1430
28/07	4	0600-1400	06/11	ALL	0800-1300
10/08	1+2	1200-1800	17/11	ALL	ALL DAY
14/08	1+2+4	0800-1300	07/12	ALL	0800-1430
18/08	4	0830-1430	11/12	ALL	0800-1300
08/09	1+2	0930-1600	01/01/14	ALL	0800-1430
LODGE LAKE			08/01	ALL	0800-1430
13/07/13	A+C	1200-1800	12/01	ALL	0800-1430
21/07	A+C	1200-1300	19/01	ALL	0800-1430
30/07	A+C	1700-2200	26/01	ALL	0800-1430
11/08	A+C	0800-1400	05/02	ALL	0800-1430
12/10	A	1300-1600	09/02	ALL	0800-1430
CALDECOTTE LAKE			16/02	ALL	0700-1400
14/07/13	A	0830-1430	23/02	ALL	0800-1430
OPEN UNI R.Ouzel			05/03	ALL	0800-1430
17/11/13	ALL	0830-1430	08/03	ALL	0800-1430
01/12	ALL	0800-1500	12/03	ALL	0800-1430
02/03/14	ALL	0800-1500	ALL OTHER OUSE & OUZEL sections None		
WHITINGS R.Ouse			GRAND UNION CANAL		
10/11/13	ALL	0800-1500	05/07/13	8A-11A	ALL DAY
07/12/	ALL	0800-1500	07/07	1A - 6A	ALL DAY
15/12	ALL	ALL DAY	09/07	12A+12B	1700-2200
05/01/14	ALL	0700-1400	23/07	15A+15B	1700-2200
02/03/	ALL	ALL DAY	24/07	2B	1700-2000
BRUSH MILL R.Ouse			28/07	1A	0700-1300
02/09/13	ALL	0800-1300	07/08	2A+2B	0800-1400
13/10	ALL	0800-1300	11/08	1A-6A	ALL DAY
20/10	ALL	ALL DAY	25/08	2A+2B	0830-1300
03/11	ALL	0700-1400	04/09	1B	1700-2000
17/11	ALL	ALL DAY	07/09	11A+11B	1200-1800
20/11	ALL	0800-1300	08/09	5A+5B	0800-1400
24/11	ALL	0800-1430	15/09	1A	0830-1500
07/12	ALL	0800-1430	28/09	1B	1300-1600
11/12	ALL	0800-1300	16/10	12A	0800-1400
01/01/14	ALL	0800-1430	30/10/	2B	0800-1400
08/01	ALL	0800-1430	09/11	3B	1300-1600
12/01	ALL	0800-1430	23/11	13B	1300-1600
19/01	ALL	0800-1300	01/12	1A+1B	0800-1500
26/01	ALL	0800-1430	07/12	1B	1300-1600
29/01	ALL	0800-1430	15/12	1A +1B	ALL DAY
09/02	ALL	0800-1430	05/01/14	1A +1B	0800-1600
23/02	ALL	0800-1430	12/01	1A-2A	0800-1430
08/03	ALL	0800-1430	26/01	1A-2A	0800-1430
12/03	ALL	0800-1430	09/02	1A-2A	0800-1430
JEAN HOLLANDS R.Ouse			16/02	1A+1B	0800-1600
28/09/13	ALL	1200-1800	16/02	15A+15B	0800-1500
20/10	ALL	ALL DAY	23/02	1A-2A	0800-1430
03/11	ALL	0830-1430	13/04	1A- 2A	0800-1430
17/11	ALL	ALL DAY	27/04	2B-3B	0800-1430
07/12	ALL	0800-1430	03/05	7A+7B	1200-1800
11/05	ALL	ALL DAY	11/05	7A-8A	0800-1430
07/12	ALL	0800-1430	25/05	10A-11A	0800-1430

More anglers' cash for Hospice



● Big-hearted **Furzton Festival** entrants have raised best part of £10,000 for Willen Hospice over the years, and the latest £1,200 is pictured being handed over by MKAA's Nuala Gray to Willen's Lyn O'Gorman (in the blue top) at the association's AGM. Willen has to be among the most worthy of worthy causes in town – so see back page for this summer's festival dates ■

Keeping it - and our image - clean

Most people already behave decently on the banks, but for those with any doubts, the following is a simple, reasonable code of behaviour.

- Please:**
- Keep the noise low, cause minimum disturbance to other anglers and nearby residents, and only park in permitted places.
 - Keep your peg tidy (including after dark) with rubbish bagged up ready to be **TAKEN HOME** for disposal. **PLEASE DON'T put it in dog poo bins!**
 - Fishing can be fun but long (more than a few hours) and after-dark sessions can bring their own needs. So please avoid causing nuisance and problems for others. *Make some decent toilet arrangements...that is not what the bushes are for.*
- Get a lift home or to a pub or whatever, while a mate looks after your kit, or have facilities inside your bivvy. Remember the old saying: leave only footprints!!!
- If some misguided soul lets their uncontrolled dog(s) come crashing around your peg/kit, **please** count to 10 and be polite in your remonstrations. THEY (and their mutts) obviously need gently educating...
- If everyone abides by the above then angling has a long and happy future on MKAA waters – **Thank you** ■

Roadside parking

IN SHORT – it is best NOT to. It is a ticketable offence to park on any pavement/verge alongside a public highway in MK (so use the car parks in the parks). This is enforced (by police & the highway authority) with particular vigour on H5/H6 (Portway/Childs Way) in the vicinity of Willen Lake and on the V4 (Danstead Way) alongside Lodge Lake. Persistent offenders can end up in court. **Also:** safety implications mean any angler parking on the verge in those two areas in particular will be breaking MKAA rule 9, ie *bringing the association into disrepute*, and may have their ticket cancelled ■

Don't get branded a 'flasher'...

A wee word in your ear...

Be discreet: OTT or not, it is no longer enough that others cannot SEE what you are doing if you are standing facing a bush/hedge with your back to passers by/neighbouring residents. Current legal interpretation is apparently that if others, though only able to see your back, have reasonable cause to BELIEVE you are relieving/exposing yourself, and **claim** to be offended by that, YOU can be dealt with by police for causing a public nuisance – **in the same way as a 'flasher'**... **Surely no one wants a record for THAT kind of conviction?** **And angling certainly does NOT need YOUR bad publicity if you do get caught out!** Be discreet – go somewhere private ■

DANGER OF DEATH!

Take care – ELECTRICITY CAN KILL YOU!

YOU don't have to touch a cable – just get near enough for the voltage to jump the gap!

So **DON'T** fish any closer than 30 metres (33 yards) to ANY cable.

Before starting to fish, look UP to check there are no cables nearby.



Remember: It's better to be biteless than lifeless!

POLLUTION

If you see fish dead, dying or in distress, oil on water etc, please call Ray on **07768 446796** or another committee member – **QUICK! AND** Environment Agency Emergency freephone **0800 80 70 60**

MKAA contacts

WANT to know who's responsible for what, need help or want to give feedback?

(all numbers 01908 prefix unless otherwise stated).

Chairman: Trevor Johnson 270000 (07801 183381).

Vice chairman: Gary Maton 07759 129800.

General secretary: Kevin Osborne 01234 713144.

Youth team: Ian Greenhood

503587 (07775 518866).

Match sec: Bob Valentine 674820.

Fixture secretary: Bas Brunning 222468.

Training & education: Nuala Gray 320007.

Head bailiff: Bill Bradshaw 07837 998492.

Assistant head bailiff: Robin Jolley 07718 095206.

Fisheries/Water Quality officer: Ray House 07768 446796.

Executive: John Hewison 07787 801189.

CANAL FISHING CODE OF PRACTICE

ANGLERS PLEASE:

- Catapulting groundbait is **BANNED** opposite boats at Bletchley Boatyard (Willowbridge).
- **DON'T** loose feed decks hulls with groundbait, it can cause paint damage. Use pole cup if you want to feed close to boats.
- **DON'T** bounce tackle off boats or tap them with pole tips – chipped paint costs money to repair and hooks in ropes can put innocent people in hospital.
- **DO** minimise noise, including bite alarms, especially when people on boats are trying to sleep.
- **DO** be discrete when answering the call of nature

THIS code is agreed with Canals and River Trust (formerly BW) for the benefit of all with special reference to where boats are moored opposite...ESPECIALLY on the Boatyard!

ANGLERS AND BOATERS

- **DO** behave reasonably and courteously at all times.
- **DON'T** leave litter or light fires.
- **PLEASE DO** keep children and dogs under control.

BOATERS PLEASE:

- **DON'T** when moored run engines or disturb the water in any way while people are fishing.
- **DO** keep to the centre of the channel and within the speed limit (4 mph) when cruising.
- **DO** moor well clear of anglers, on the towpath side, where users have priority on first come first served basis.

Getting away from it all on the Upper Ouse

Passenham Meadow



An angler's dream come true – that can be the Upper Ouse on a good day with its huge chub, great perch, hump-backed bream, red-finned roach and flashing dace. Then there's its big pike and occasional barbel.

But there are days, when fishing on 'parkland' sections, when it can seem as though half the people in the world are passing behind you...with too many of them allowing their dogs to do exactly as they please.

But, with access to Passenham Meadow

(Long Meadow to some) there's chance to enjoy the river's rural aspect without having to go miles out of town.

Now owned by the Parks Trust (which bought the land when the Mexican-rooted CEMEX global sand and gravel empire sold it) the huge meadow is used for grazing and, while long-established footpaths are open to the public, has no hard paths and seems to attract few people who aren't there to fish.

It is a picturebook place, as near to 'traditional' rural Upper Ouse as you can get, and features many bends, deeps, shallow runs and overhanging willows.

And you never know quite what it will produce. One day last winter Dougie from Northampton's Carpin Capers went there looking for big perch...and landed a 5lb+ tench...in February.

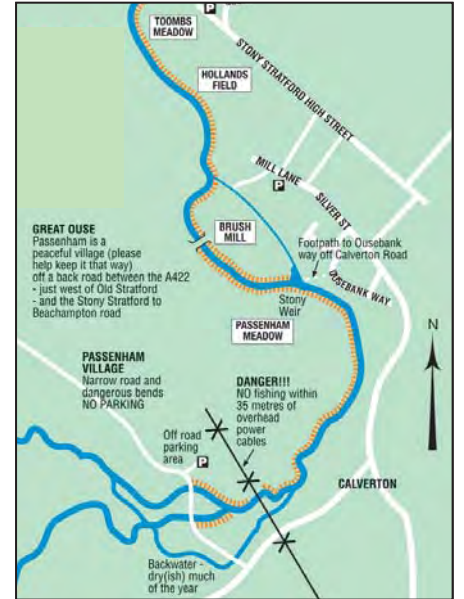
Best part of a mile long it runs along the west bank above Stony Stratford – from the tiny Passenham village (on a BUSY lane linking the Old Stratford-Buckingham A road with the Calverton road) to the iron footbridge which crosses the river on Brush Mill. Do not fish near the overhead power cables on this stretch (or any other).

For the last few hundred yards it 'overlaps' Brush Mill on the opposite bank, so if there is a match on there please don't fish opposite – the river is too narrow for that.

● Access is either over the iron bridge



(perhaps parking in Ousebank Way) or from a small hard surface car park just inside the field gate at Passenham, signed up as Parks Trust grazing land. Please keep the gate closed and don't obstruct the farmer's access.



PLEASE REMEMBER:

All rivers and streams in England are subject to a legal close season – **NO fishing** – from March 15 to June 15 both dates included

● Left: Mike Sando with a high double figures winter roach, dace, perch and chublets net from the 'Meadow.'

Above: Trevor Johnson with a trio of chub from 4-2 to 4-14 in a March 14 session – using a size 16 and 5 metre whip.

And yes, at this pair's ages, after a hard day behind the rods probably the only realistic option left IS to lay down...

Quality Bed & Breakfast

The Abbey

established 2001

43 Victoria Road
Bletchley
Milton Keynes
MK2 2NN



01908 643872 / 07958 310703

Looking for a place to stay while fishing in MK?
Just 10 minutes drive from Furzton, Caldecote & Tear Drops lakes

Carpin Capers

THE No 1 for miles around...

53-54 Barrack Road

NORTHAMPTON

NN1 3RL

Now **THE** local shop for **ALL** specialist, leisure & match anglers – not just carpers

Come and have a browse around our angling wonderland

Staffed and run by experienced anglers. Stop for a chat and we can talk you through local waters and the latest tackle and methods

if you are new to the sport or the area, or just coming back into angling



Fancy something **REALLY** special?

We have our own bait lab – having invested in state-of-the-art equipment, products and expertise. If you have your own ideas or special formula, we can provide:

- Bespoke boilie-rolling
- Freshly prepared particles/groundbaits
- Our own in-house bait ranges and more
- Also: wide range of predator baits stocked
- **Maggot & caster**

Fresh bait delivered to the shop twice a week by trusted local supplier



Most major brands carried in stock but...

If we haven't got it we will try and get it for you!

Opening hours: 8.30-5.30 Mon-Thurs, 8.30-6 Friday, 8.30-5 Saturday
8.30am -1pm on Sundays - March through October



01604 634115
sales@carpincapers.co.uk
www.carpincapers.co.uk



Getting out of town...

The waters around Oxford are something special and, generally, only an hour's drive from MK.

But please be on your best behaviour. **They are made available to MKAA members courtesy of North Oxford Angling Society and MUST be treated with the UTMOST RESPECT.**

● The Thames, Cherwell, Seacourt Stream and even the Oxford Canal have characters of their own, and the arrangement for MKAA members to fish these NOAS waters helps make your association card a winner.

There are also Oxford and District AA waters which can be fished on dayticket. **Want to know more? Call NOAS's Andy Crisp, on 01865 53800.**

● MKAA members can NOT hold matches on NOAS waters (unless by prior arrangement) and **NIGHT FISHING is NOT allowed** on NOAS waters.

If you use them please be a good MKAA ambassador... you are a guest on someone else's patch.

CHERWELL (approx 1 mile)

Access West bank from Marston Ferry Link Road B4495 (see OS map for route from A34 Peartree interchange) from either cycle track or footpath shown; downstream of bridge (access from bridge) one meadow, upstream three meadows. East bank: upstream two meadows above Victoria pub; and downstream to park boundary fence opposite Wolfson College.

THAMES (approx 3.5 miles)

Access from Wolvercote to Wytham road bridge (see OS map) park in the Wolvercote Bathing Place public car park (river downstream can be fished on ODAA day ticket).

Parking NOT allowed in Trout Inn (great food) car park unless with specific permission of landlord. Access to King's Lock end from 'University Field Station' (see Seacourt Stream map) and top end of Pixey Meadow via bridges over the lock

and King's Weir. Parking alongside A34 and crossing that road on foot is NOT recommended.

SEACOURT STREAM (approx 3.5 miles)

Access from Wolvercote to Wytham Village road bridge (see OS map). East bank: NO fishing opposite far bank houses (south side of bridge) and

NO fishing in first meadow (north side of bridge). Access also from track leading to University Field Station. Follow road from Wolvercote into Wytham and turn right, take track towards UFS, park on verge just BEFORE notice board (no parking or turning beyond it). Walk across field to stream. Crossing bridge over stream gives access to Kings Lock/Kings Weir Thames area.

OXFORD CANAL (approx 4.5 miles)

Fishing towpath side from Hythe Bridge Street in Oxford, north to Bullers Bridge in Yarn Lane, Kiddlington and Plough Inn at Wolvercote good access points for first time visitors ■



● Bletchley's Bill McDonald pictured with PB 3-12 perch from the NOAS Cherwell



Canal & River Trust

- MATCH FISHING • SPECIMEN HUNTING •
- PLEASURE FISHING • TROUT FISHING •

THE TRUST HAS THE RESERVOIR VENUE FOR YOU

ALL WITHIN EASY TRAVELLING DISTANCE OF MILTON KEYNES

DRAYTON

Fabulous water for the carp fishing enthusiast. Keep in touch on Bailiff Mark's first class site. www.facebook.com/fishingdrayton.

CLATTERCOTE

Will it be a carp, tench, bream or specimen roach? If you like variety in your fishing and great surroundings this reservoir is for you. Great for matches as well.

BODDINGTON

The ultimate bagging water, huge match weights at this top class nationally recognised venue. If you or your club has not fished it yet you are missing out.

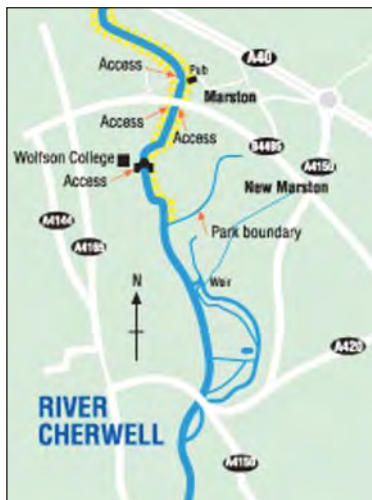
NASEBY

Looking for something different? Contact the bailiff Harry on 07904 493417 for an update on the carp and roach fishing; don't forget winter pike.

For general information including permit prices, local contact details and week end match bookings contact the Fisheries booking office 01582 843454.

TRING RESERVOIRS

These nationally known specimen waters are available on day or season tickets. The record perch, double figure tench and bream, 40lb plus carp, huge pike and catfish. Top quality fly fishing also available on day and season permit basis. Full details available on 01582 841985.



GONE- FISHIN



**RUN BY ANGLERS, FOR ANGLERS
SPECIALISTS IN SPECIMEN,
MATCH & GENERAL COARSE
NEED ADVICE - ASK OUR STAFF
OPEN LATE ON FRIDAYS**



**TOP QUALITY BAIT ALWAYS
AVAILABLE
MAGGOTS, WORMS,
SHOP RUN CASTERS ETC.
PLEASE CALL TO ENSURE
YOUR ORDER WILL BE READY**



**STOCKISTS OF ALL
MAJOR BRANDS
ROD & POLE REPAIRS
IF WE HAVEN'T GOT IT,
WE WILL DO OUR BEST TO GET IT!
DON'T FORGET TO ASK HOW MUCH,
WE CAN PROBABLY PRICE MATCH!**

**OPENING HOURS
MONDAY-THURSDAY 8:30 - 17:30
FRIDAY 8:30 - 20:00
SATURDAY 8:30 - 17:00**



01908 313158

www.gone-fishin.co.uk

26 CHURCH ST, WOLVERTON, MILTON KEYNES, MK12 5JN

The Upper Ouse...

Recent winters have been dire...but that hasn't stopped the Ouse producing great catches for those lucky – or skillful – enough to do the business.

Chub to 6 or 7lb+ (an 8-2 at Adams) 4lb perch, bream to 7, good dace and roach plus some hefty pike have all been out on the banks from Stony to Ravenstone.

Some can, on their day, produce sport Mr Crabtree would have lusted after.

Barbel, stocked by MKAA over a decade ago, flourished, and some are still there despite the otters.

Wolverton Mill & Whittings have produced them to 19-4. Most sections are better known for huge chub, big bream, perch, roach and pike. The abominable signal crayfish is also present.

Stone Park used to hold the association's chub record at 7-12-0 (until an 8-2 came out at Adams) has the odd big whiskers and can produce good roach nets along with nice-sized dace.

Throughout the upper river chub and perch feed on crayfish, and the stripeys can top 4 lb with at least two matches won with around 30lb of them

from **Brush Mill, Hollands Field, Toombes** areas (map, page 9).

There's even the odd tench...and the four hour MKAA river match record is 78 lb of slab-sided bream to 7-13-0.

Brush Mill backwater can fish well in flood. Below the Old Stratford river bridge on the V4 Watling Street is no go unless you have a DATS' card, until you get to the top of **Wolverton Mill** which, together with the Ouse back of **Bradwell** Lake has good, chub, dace, roach and bream.

● Down stream

at **Ravenstone Mill** the Ouse still holds superb big barbel – double-figure fish reported last season...and it's a fair bet there are larger ones yet to be caught. There are also good chub, bream, pike, dace and perch.

Downstream of the weir the river is fast and streamy (great for walking and stalking) while the deeper water upstream can yield big carp washed out of riverside lakes.

● **Adams Mill** still holds the UK record barbel title (having taken it SIX times on the trot) at 21-1-0 – an incredible fish from the long-gone days when MKAA had to run the water on a syndicate basis.

Like most of the Ouse it can be weedy in summer, but casting between the weeds can work!

On ALL our river sections please watch out for undercut banks and, if in the water, sudden drop offs into unexpectedly deep holes.

● **Please note: NO day tickets or night fishing on Ravenstone or Adams Mill** ■



● **PROBABLY the greatest Upper Great Ouse chub catch – ever! That was Jake Stratton's stunning haul.**

Incredibly, as others shunned the partly iced-over river on a February Sunday, he netted SIXTEEN chub in an afternoon.

Two from Brushmill were followed by 14 more (8 in an hour) from Toombes.

He'd been trying to keep the catch quiet, but news that he'd included two 4s, two fives and fish of 6-3, 6-6 and 6-14 in his bread-on-the-lead session soon leaked out.

Pictured by Bill McDonald with the eight-fish-in-an-hour part of his catch, Jake said: "I was trying a slightly different way of fishing bread, and it worked."

You've got to hand it to 'ice-man' Jake – when others are afeared to go out in the snow... the lad is there filling his net ■

● Above: when Gary Britton took time off from matches for a leisure session on the Stony Ouse he ended up with this cracking 7-10 chub (pictured by John Hewison) – having hooked it while working single maggots through a 9-foot deep run on 16.5 metres of pole...

...And the Ouzel

The tiny Ouzel is a lovely little river with some mighty fish – and five miles of it running through the city are on the MKAA card.

It has really good fish of most species and,

especially behind and just downstream of Willen Lake, you might well bump into a double figure barbel. Big chub, dace, roach, pike and even the occasional bream and rudd are all part of the scene. See MKAA season ticket or www.mkaa.co.uk for access details. With a hard path most of the way, a bike is often good ■



● Granddad to Jake (above) Roger Stratton had this 6 pounder from the Ouzel. He taught Jake everything he knew about fishing. Then the lad went off and did it HIS way...and REALLY began to catch. LoL

THE TACKLE HUB

@ WEAL'S

7 Park Street, Towcester, NN12 6DQ
0800 107 7 207 www.thetacklehub.co.uk

Great tackle and bait from

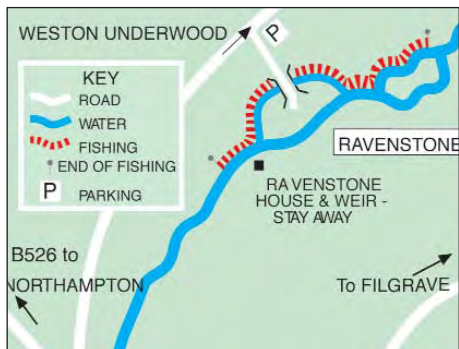
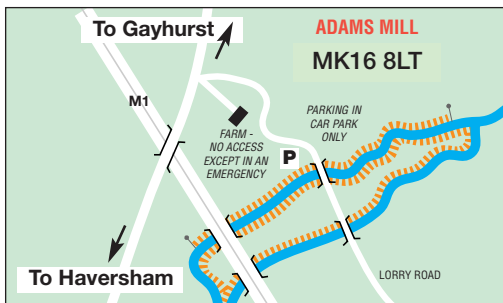
Plus more...

- ★ Bait
- ★ End Tackle
- ★ Luggage
- ★ Chairs & Beds

- ★ Alarms
- ★ Bivvies
- ★ And much, much more...

we stock towcester & district angling association, MKAA & Newport pagnell FA club books

Having trouble reading these little maps? Bigger ones are in the MKAA season card and on our website @ www.mkaa.co.uk



CELEBRATION FIREWORKS
from **Willards**
ALL YEAR ROUND!
Prices from as little as £5!
At Willards Tackle
(Fishing & shooting supplies, too)

01908 225353
47 Newport Rd, New Bradwell, MK13 0AQ

Could YOU 'win on the float'?

• This year's Furzton (plus canal and Tear Drops) Festival is set to include, for the first time, a 'float only' open.

When no-one volunteered to run the usual 48-hour carp match, the people at GoneFishin – who already run the Frank Swan memorial – came up with the back-to-tradition idea.

And the interest shown, once word began to get around, has been fantastic. So if you fancy a crack at something not involving big leads, spods and feeders like drainpipes, be quick about getting your name in the frame.

If you don't particularly fancy that one, then there's plenty of others to choose from (below). *It's all in a good cause and the series has so far raised some £10,000 for Willen Hospice* ■

Furzton Festival 2013

Ken Ball Memorial Open

Aug 21: (over 55s) call: T Valentine 01908 565446

Match for the Disabled

Aug 23: call B Sapsford 01908 608944

Float Only Open

Aug 24: call R Swan 01908 506678 and also for the

Frank Swan Memorial Open

Aug 26 (bank holiday Monday).

Young People's Open

Sep 4 – Bletchley boatyard canal: call N Gray 01908 320007 & also for

Ladies Open

Sept 7 & also for

Mixed Pairs Open

Sept 8, Tear Drops 1 & 2

And it's goodbye from him - again!

• Long-time MKAA fisheries officer **Phil Oxley** has retired from the job – for the second and, he says, final time.

Most members won't know him but, if they enjoy the association's waters, they probably have something to thank him for.

Phil was the main architect of MKAA's stocking policy for best part of 30 years – a spell interrupted only when his 'day job' took him out of town for a while.

Among a great many other things he sorted the original stocking of Furzton, including half-a-ton of carp from a local trout fishery.

...and creation of Wolverton Mill, MKAA's popular 'fun puddle'.

...and the emphasis on tench (plus some carp) as stock for Brad'll Lake.

His latest involvement has been planning a more 'commercial'-style fun fishery in the Bletchley area which should be open by the spring (watch MKAA's website).

Pretty good at taking fish out, as well as putting them in, he is pictured

with a 7-1 'Stony Ouse' chub.

Thanks Phil. Happy retirement – again ■



Will YOU help swap rubbish for fish?

NO – this is NOT a wind up. It **CAN** be done... **IF** enough people are willing to give it a **TRY**.

Each year MKAA spends a couple of grand and a huge amount of volunteer bailiff effort (thanks for that) clearing bankside rubbish.

Most of it is NOT from anglers (though sadly still too much is) but has ended up bankside where it LOOKS as though it has all been left by maggot dangles.

So in our own best interest it has to be cleared.

And each year the Parks Trust, our major landlord, spends many times as much as we do on such clearance.

That's 10s of thousands

which, because so many people have filthy habits, get sent straight to money heaven!

How much better if some of that cash went, instead, on extra fish stocking?

It is not brain surgery. What is saved on one thing can be spent on another.

It's a deal which CAN and WILL be done, if enough people do their bit.

Obviously the first move is for any anglers who DO risk a ban from MKAA waters by leaving litter to STOP doing so – and to STOP leaving it bagged up in car parks or bushes for others to collect, and to STOP putting it in dog poo bins.

Take it home with you!

Harder for some to swallow is the idea of everyone carrying a supermarket carrier bag, collecting any waterside rubbish they see (whether in 'their' swim or not) and taking it home for

the council's weekly rubbish collection.

If enough people do that we will be making a difference – one which can be converted straight into extra fish.

It is so simple. Are YOU up for it? ■

Encouraging new recruits

• The more people who buy fishing tickets the less expensive our sport becomes for all...and the more fish are encouraged to see baits as everyday fodder.

So if you know anyone (from child to grandparent) who you think would like to try fishing and maybe take it up, please point them to Nuala Gray on 01908 320007.

No slouch with a rod herself, she leads MKAA's team of qualified coaches and has all the kit and bait needed to give people both taster sessions and coaching ■

AND: best wishes to city lad Terry Lancaster who has won his 5th England cap, and joins the national team in the World Veterans' Champs in Bosnia, in August. Go for it, Tel ■



TAILENDER: The Ouse stripeys have been growing apace, no doubt feeding on junior crays, and Michael Buchwilder had this 29lb match-winning catch of fish to 4lb on MKAA's Stony Stratford section ■



Grovebury Road
LEIGHTON BUZZARD
Bedfordshire
LU7 4UX
Tel: 01525 216370

Thame Road
HADDENHAM
Buckinghamshire
HP17 8BY
Tel: 01844 290663

SITUATED IN BEDFORDSHIRE AND BUCKINGHAMSHIRE - TWO MAJOR ANGLING SUPERSTORES SERVING THE COUNTRY!

We are a leading stockist for all major manufacturers

ANCHOR ANGLING TECHNICS ATOMIC CARP CATMASTER CENTURY CC MOORE CHUB COLEMAN DAIWA DRENNAN DYNAMITE ENTERPRISE TACKLE ESP FOX FRANK WARWICK BAITS GARDNER GREYS JAG JRC KORDA KRYSTON MAINLINE MAVER MUDDY WATERS NASH NAVITAS CARP-PORTER PRESTON INNOVATIONS RICHWORTH SENSAS SHAKESPEARE SHIMANO SOLAR TRAKKER WYCHWOOD

Free customer parking



OPEN - Mon - Sat 8.00am - 5.00pm Late night Friday - 6.00pm
Visit one of our stores or buy online at www.brownsangling.co.uk